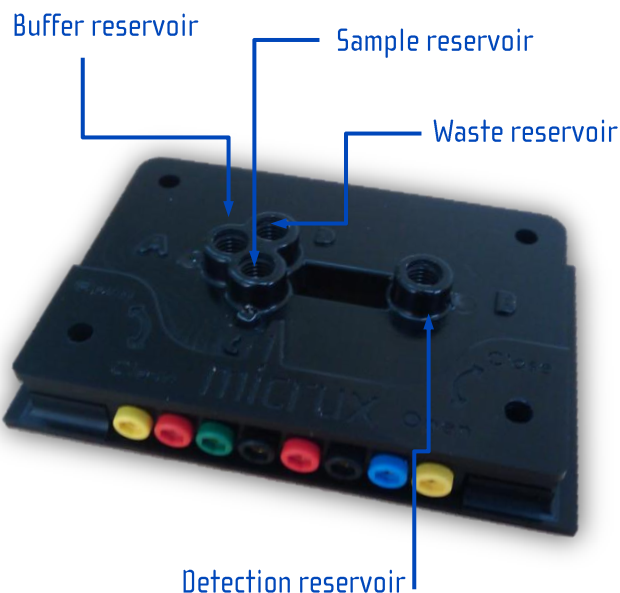


Microchip Holder



The chip holder (ref. MCE-HOLDER-DCO2) is the most recent friendly interface for easy use of single and dual-channel microchips with integrated electrochemical detection.

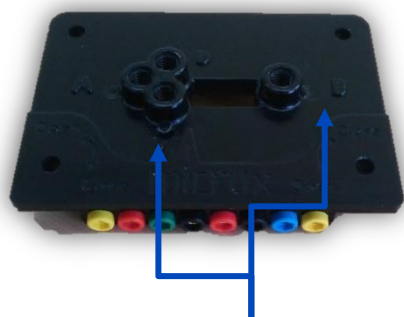


Technical Features

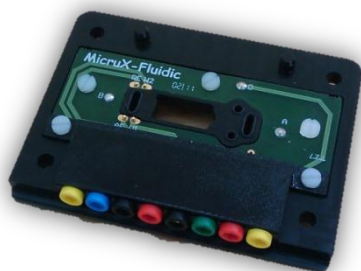
- » Dimension: 100 x 65 x 15 mm.
- » Material: black-methacrylate
- » Integrated wells (buffer solution, sample, waste and detection reservoir).
- » High voltage electrodes: Platinum (300 μm \varnothing) included on the cover (top part).
- » Electrical contacts for detection and voltage electrodes on integrated PCB.
- » Reusable
- » It can be used with single & dual-channel microchips (38 x 13 mm) with integrated electrodes.

The chip holder (ref. MCE-HOLDER-DCO2) consist of two parts joined with plastic wing-screws.

» TOP PART

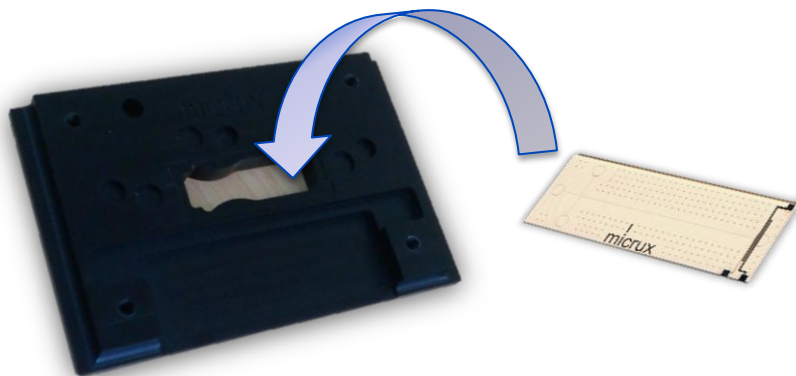


Platinum HV electrodes

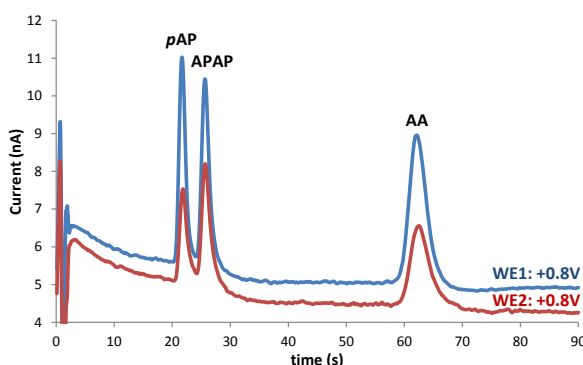


Electrical contacts on integrated PCB

» BOTTOM PART (chip accommodation)



:: Microchip holder performance with single-channel SU8/pyrex microchips with an interdigitated array microelectrode (MCE-SU8-IDA-Pt005T)



Electropherogram for the separation of 100 μM pAP, 200 μM APAP and 400 μM AA

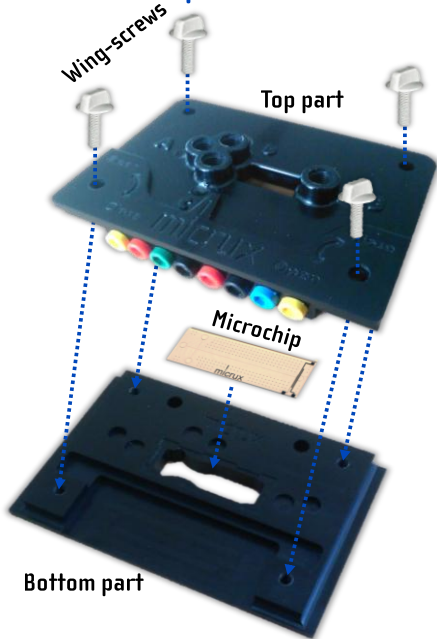
Conditions: Running buffer: 20 mM MES pH = 6.0; V_{inj} = +750 V for 3 s, V_{sep} = +1000 V.

MicruX Starter Pack



MicruX Technologies provides a complete solution for microchips capillary electrophoresis with electrochemical detection

» MICROCHIP HOLDER



Integrated lab-on-a-chip solution

Low-cost & power requirements

Miniaturization

Adaptable

» MICRUX[®] HVSTAT



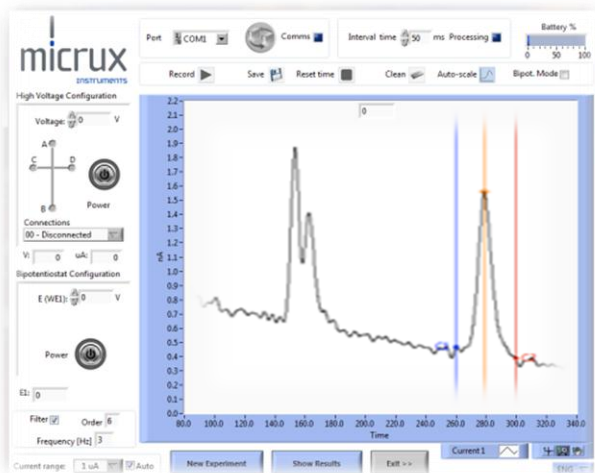
» Portable instrument (165 x 150 x 85 mm)

» High Voltage Power Supply

» Bipotentiostat for amperometric detection

» Easy-handle smart chip interface

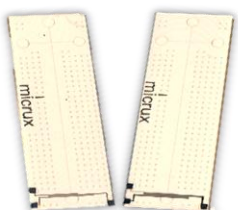
» MICRUX[®] manager



» User-friendly graphical interface

» 10 MICROCHIPS !!!!!!!

» Single-channel microchips with integrated electrodes



All the system is provided in a smart suitcase

